

Start Procedures



PORSCHE

GT3 CUP CHALLENGE
USA
BY YOKOHAMA



PORSCHE

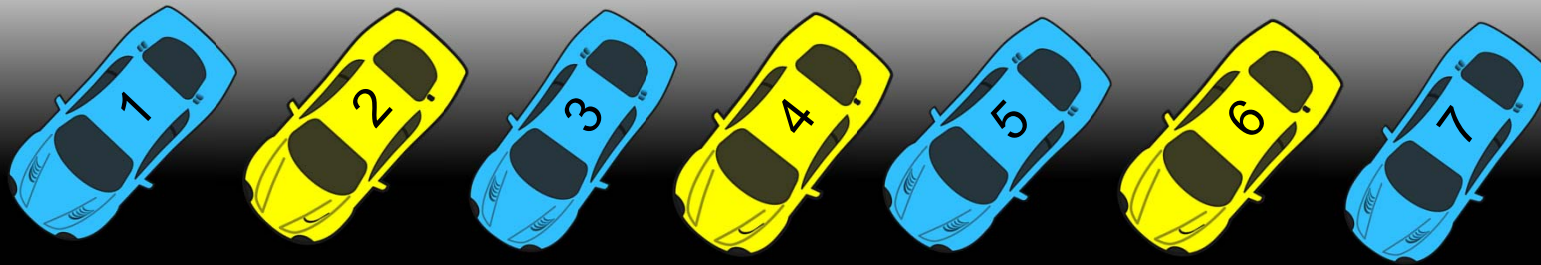
GT3 CUP CHALLENGE
CANADA
BY YOKOHAMA



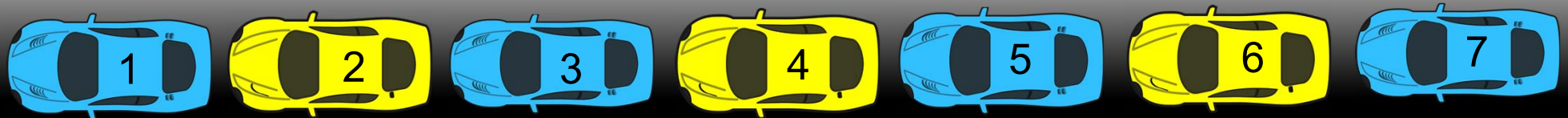
Standard Rolling Start

For all starts, when instructed to pair up, cars should move left to right according to the car in front of them. The pole car will start the process.

Grid Order:

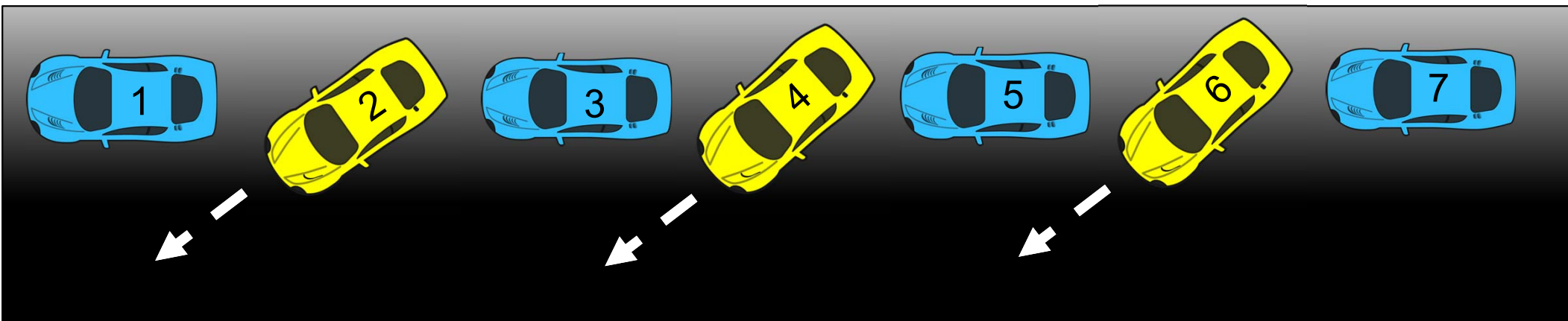


Rolling off grid in order:

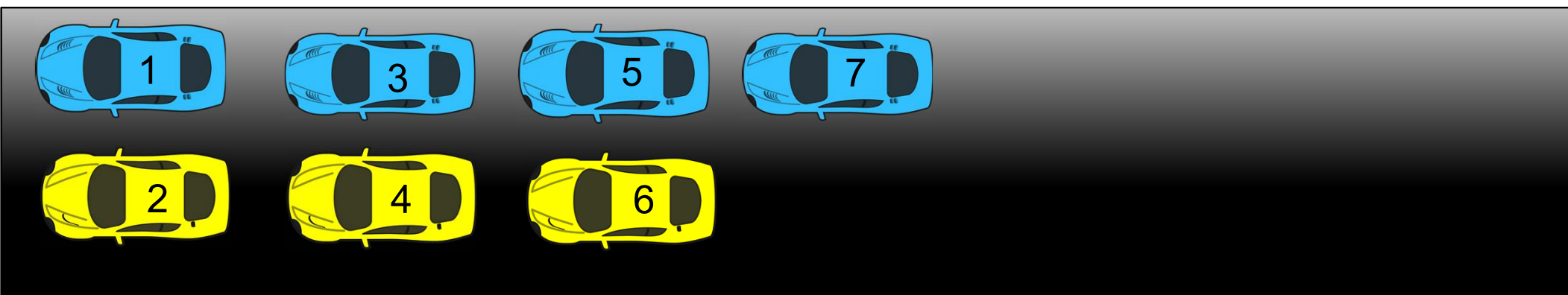


Standard Rolling Start

Lining up at call to pair up (pole is drivers' right):



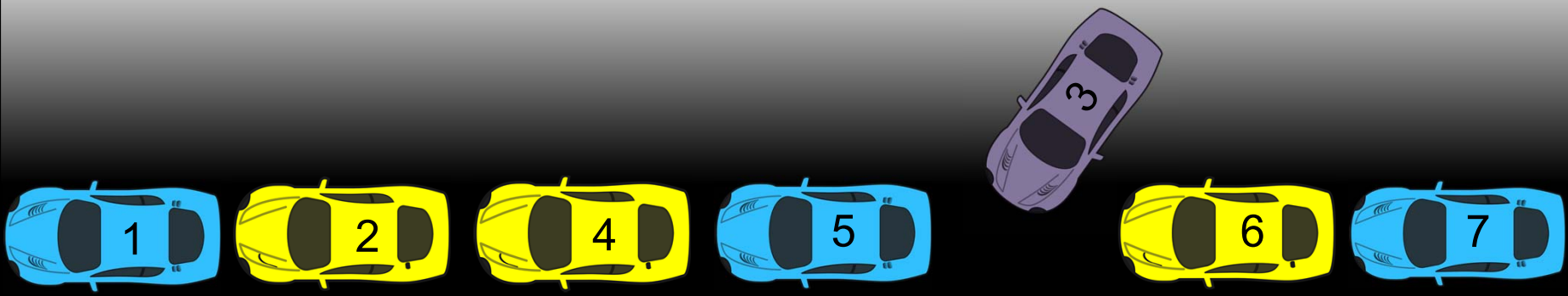
Line up after pair up:



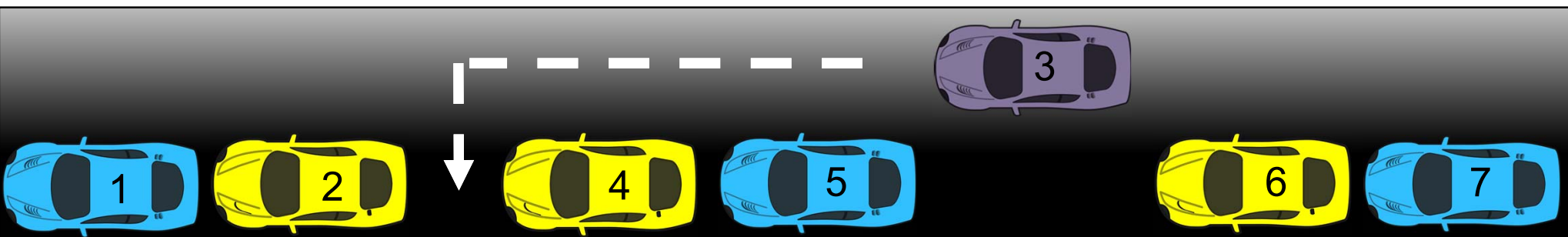
Start Line Up – Delayed Car

If car is delayed leaving grid or goes off track during pace laps, but not all cars pass that car, the car may retake its position.

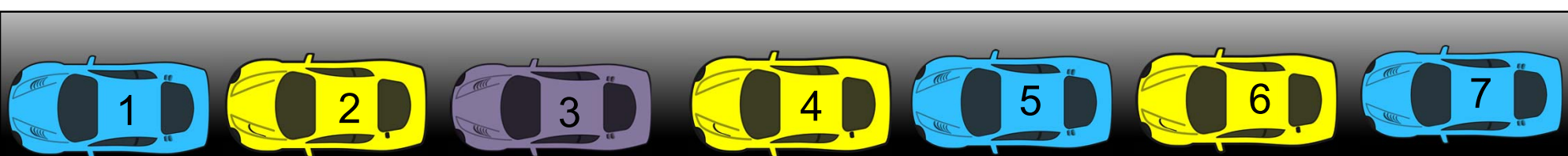
Car late leaving grid:



Car retaking position:

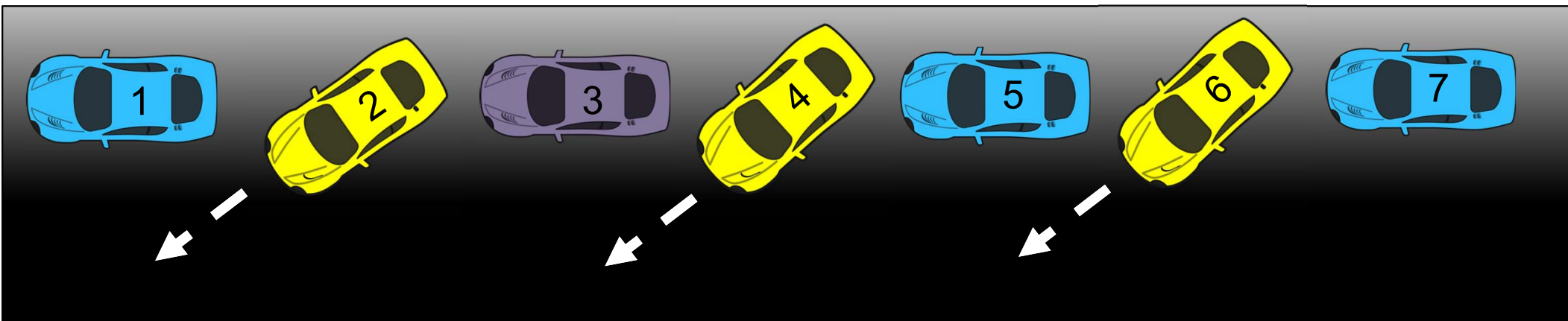


Line up on track:

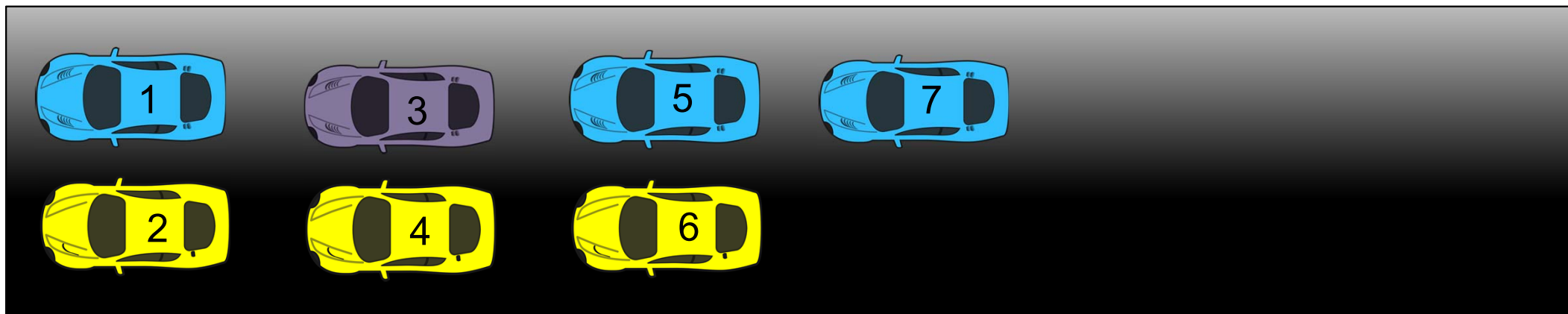


Start Line Up – Delayed Car

Lining up at call to pair up (pole is drivers' right):



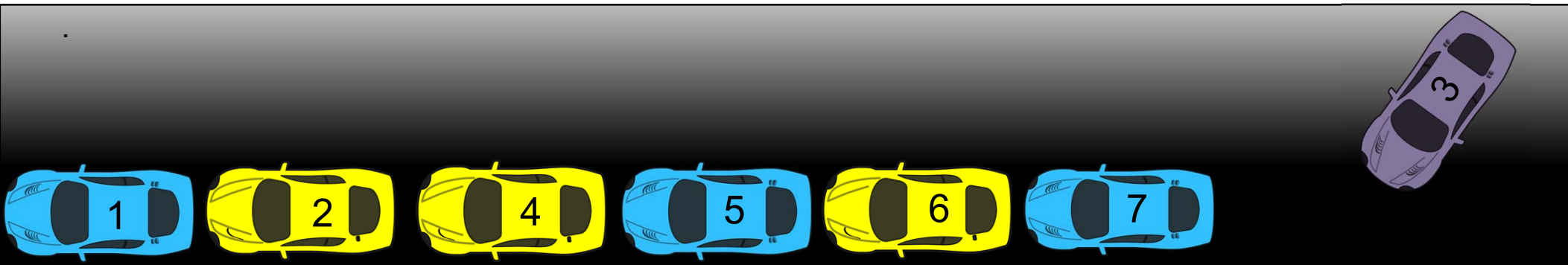
Line up after pair up:



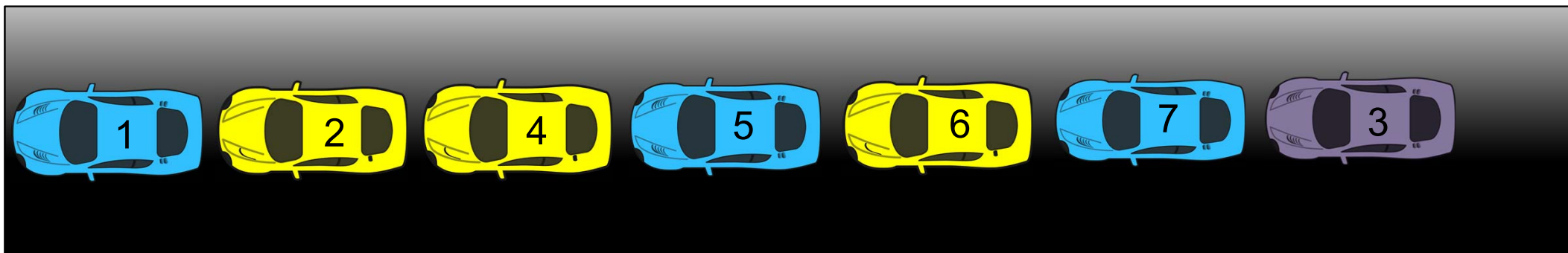
Start Line Up – Car Not On or Late To Grid

If car does not present to the grid, stalls leaving the grid, or goes off track and all other cars pass it, that car lines up at the back:

Car not on or unable to leave grid, or passed by all other cars:

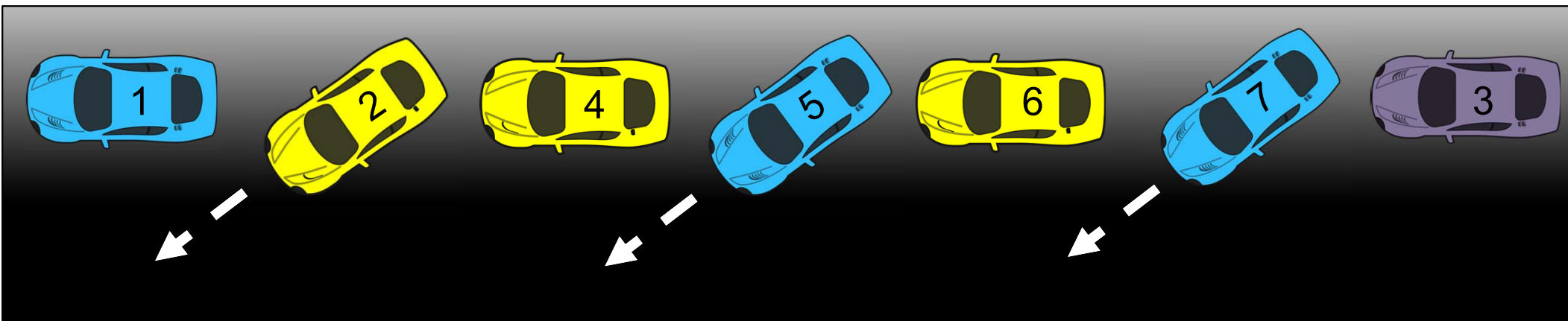


Line up once on track:

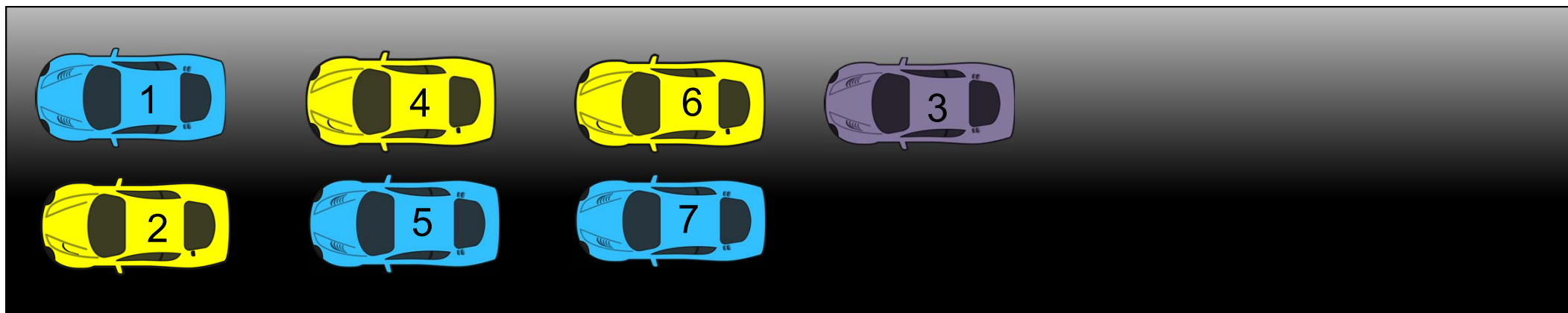


Start Line Up – Car Not On or Late To Grid

Lining up at call to pair up (pole is drivers' right):



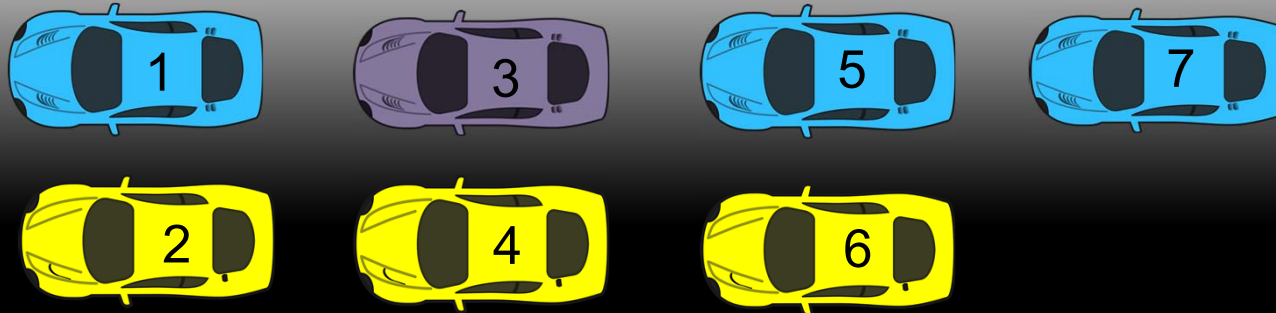
Line up after pair up:



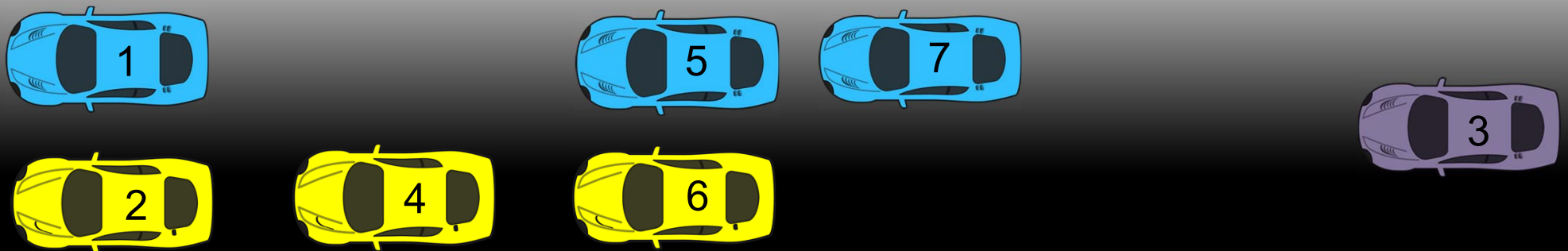
Start Line Up - After Pair Up

Once the call for cars to pair up has been made, if a car goes off track, regardless of if the entire field has passed that car or not, that car lines up at the back and all other cars move up to fill in the column:

Cars paired up:



Car goes off track:



Start Line Up - After Pair Up

Cars fill in the column:

