

Tire Technical Specs Bulletin

DATE: January 1, 2025

To: Porsche Carrera Cup North America Competitors

CC: IMSA, PMNA, TSP

RE: 2025 Tire Technical Specs

Yokohama is the official tire of Porsche Carrera Cup North America. Specifically, the ADVAN A005 slick tire and ADVAN A006 rain tire will be used in competition.



ADVAN A005



ADVAN A006

The technical specifications of the A005 and A006 are provided below.

992 – Dry Tire

Axle	Part #	Article	Size	Tread	Compound	Overall Diameter	Tread Width	Section Width	Rec. Rim Width
Front	150113003	N2845	300/650R18	A005C	A60	650	305	330	12
Rear	150100711	N2736	330/710R18	A005G	A80	706	338	356	13

992 – Wet Tire

Axle	Part #	Article	Size	Tread	Compound	Overall Diameter	Tread Width	Section Width	Rec. Rim Width
Front	150113045	N2790	300/650R18	A006F	W60	653	312	328	12
Rear	150100713	N2924	320/710R18	A006F	W60	709	333	353	13

Note – the maximum allowed rear camber is reduced for certain circuits.

992 - Slick Tires

Carrera Cup Schedule

Axle	Specification	Sebring	Miami	Montreal	Watkins Glen	Road America	Indy	Road Atlanta	COTA
Front	Max Camber	-4.5°	-4.5°	-4.5°	-4.5°	-4.5°	-4.5°	-4.5°	-4.5°
	Min Cold Pressure	18 psi	18 psi	18 psi	18 psi	18 psi	18 psi	18 psi	18 psi
Rear	Max Camber	-3.5°	-3.5°	-3.5°	-3.2°	-3.2°	-3.5°	-3.2°	-3.5°
	Min Cold Pressure	17 psi	17 psi	17 psi	17 psi	17 psi	17 psi	17 psi	17 psi

992 – Wet Tires

Carrera Cup Schedule

Axle	Specification	Sebring	Miami	Montreal	Watkins Glen	Road America	Indy	Road Atlanta	COTA
Front	Max Camber	-4.5°	-4.5°	-4.5°	-4.5°	-4.5°	-4.5°	-4.5°	-4.5°
	Min Cold Pressure	23 psi	23 psi	23 psi	23 psi	23 psi	23 psi	23 psi	23 psi
Rear	Max Camber	-3.5°	-3.5°	-3.5°	-3.2°	-3.2°	-3.5°	-3.2°	-3.5°
	Min Cold Pressure	22 psi	22 psi	22 psi	22 psi	22 psi	22 psi	22 psi	22 psi

Required Arrow Direction for Tire Mounting

Slick tires must be mounted on the car with directional arrows pointing toward the center of the vehicle. This ensures the tire rolls across its tread splice under hard acceleration and heavy braking. Wet tires must be mounted with directional arrows pointing to the front of the car.

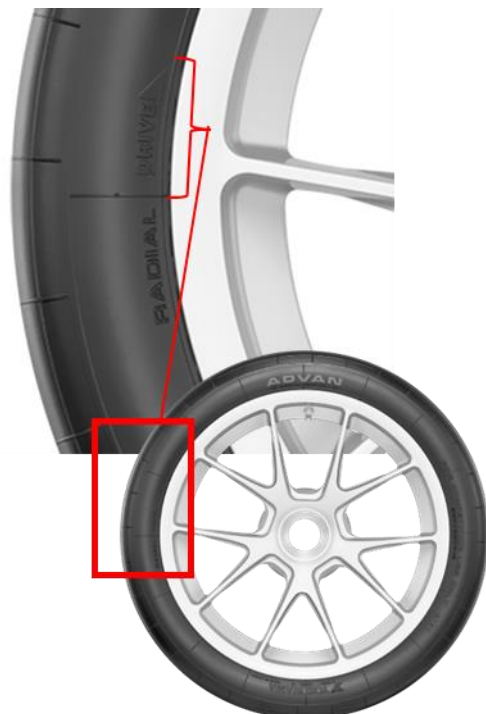
992 Cup Car - DRY

Arrow → ← Arrow



992 Cup Car - WET

← Arrow ← Arrow



Sincerely,

Tricia Wall

Tricia Wall
 Motorsports Senior Manager
 patricia.wall@yokohamatire.com